

DIE HANDLER

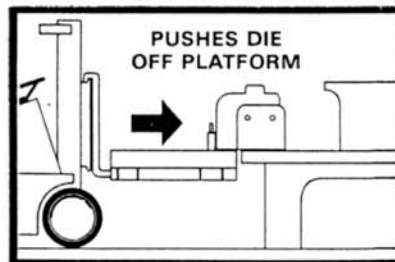
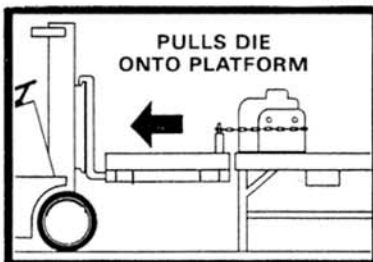
Moves dies on and off machines to racks or storage areas with ease

- **Allows Maximum Flexibility, Convenience** — fork pockets on all four sides permit mounting from any direction, so dies can be pulled or pushed either sideways or front-and-back.
- **Rugged Construction** — made of heavy-duty structural steel and welded into a single body unit.
- **Single Hydraulic Function** — powered by a heavy-duty hydraulic motor connected to a drive chain which moves the drawbar with equal power in both directions.
- **Fits Most Models** — available in several makes for both gas and electric trucks, with a variety of handling surfaces (ranging from 32 x 36 inches, to 54 to 60 inches).
- **Easy Installation** — pins are used to secure unit to forks to prevent sliding or shifting; quick-disconnect couplings connect truck lines to unit outlets.
- **Safety Cover** — protects operator from internal chains, meets OSHA safety standards.

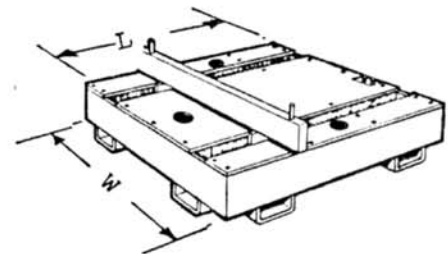
Hydraulic Die Handler Single Hydraulic Function

Model No.	Capacity (24" L.C. (Lbs.))	Length (In.)	Width (In.)	Height (In.)	Approx Weight (Lbs.)
DH3236-20	2-3000	32	36	9 1/4	575
DH3648-20	2-3000	36	48	9 1/4	800
DH3648-40	4-5000	36	48	9 1/4	1000
DH4848-40	4-5000	48	48	9 1/4	1125
DH3648-60	6-7000	36	48	11 1/4	1200
DH4848-60	6-7000	48	48	11 1/4	1325

(A) Advise fork dimensions when ordering (B) For larger capacities, consult factory



Die is removed from attachment by pushing die with draw bar.



201 W. Oklahoma Ave.
(405) 227-3711

Fairview, OK 73737
FAX 405-227-2165

PRINTED IN USA